

- CONTROL**
- ⊙ No. 23 = T=846,199.84 feet, X=1,943,074.17 feet, Brass disk and Control Monument No. 23 Set in east of back of curb
  - ⊙ No. 24 = T=846,328.07 feet, X=1,943,475.71 feet, Brass disk and Control Monument No. 24 Set in east of back of curb
  - ⊙ No. 25 = T=846,456.50 feet, X=1,943,877.25 feet, Brass disk and Control Monument No. 25 Set in east of back of curb
  - ⊙ No. 26 = T=846,584.93 feet, X=1,944,278.79 feet, Brass disk and Control Monument No. 26 Set in east of back of curb
  - ⊙ No. 27 = T=846,713.36 feet, X=1,944,680.33 feet, Brass disk and Control Monument No. 27 Set in east of back of curb
  - ⊙ No. 28 = T=846,841.79 feet, X=1,945,081.87 feet, Brass disk and Control Monument No. 28 Set in east of back of curb
  - ⊙ No. 29 = T=846,970.22 feet, X=1,945,483.41 feet, Brass disk and Control Monument No. 29 Set in east of back of curb
  - ⊙ No. 30 = T=847,098.65 feet, X=1,945,884.95 feet, Brass disk and Control Monument No. 30 Set in east of back of curb
  - ⊙ No. 31 = T=847,227.08 feet, X=1,946,286.49 feet, Brass disk and Control Monument No. 31 Set in east of back of curb
  - ⊙ No. 32 = T=847,355.51 feet, X=1,946,688.03 feet, Brass disk and Control Monument No. 32 Set in east of back of curb
  - ⊙ No. 33 = T=847,483.94 feet, X=1,947,089.57 feet, Brass disk and Control Monument No. 33 Set in east of back of curb
  - ⊙ No. 34 = T=847,612.37 feet, X=1,947,491.11 feet, Brass disk and Control Monument No. 34 Set in east of back of curb
  - ⊙ No. 35 = T=847,740.80 feet, X=1,947,892.65 feet, Brass disk and Control Monument No. 35 Set in east of back of curb
  - ⊙ No. 36 = T=847,869.23 feet, X=1,948,294.19 feet, Brass disk and Control Monument No. 36 Set in east of back of curb



SCALE: 1 IN. = 100 FEET

NOTE: All Courses, Distances, and Coordinates shown hereon refer to the TEXAS COORDINATE SYSTEM - CENTRAL ZONE.

To obtain horizontal distance at mean elevation for this area multiply map grid distance by 1.00014689

- LEGEND**
- 5/8" Iron rod
  - Black Corner, P.C. OR P.T. (5/8" Iron rod except as noted)
  - ⊙ Control Monument (Brass disk in concrete)
  - ∠ Central Angle of Curve
  - R Radius of Curve
  - L Length of Curve
  - LC Long Chord bearing and distance

- NOTES**
1. There is a 10.00 foot wide drainage and underground utility easement and restricted building area adjoining both sides of the streets shown hereon.
  2. Control Monuments shown and described hereon reference the correct position for the lot and block corners and curve points in this section of this addition. These control monuments should be used when it is necessary to reset any lot or block corner or curve point in this section of this addition.
  3. Dedication and Deed Restrictions are recorded in Vol. \_\_\_\_\_ at page \_\_\_\_\_ of the Deed Records of Tom Green County, Texas.

**DESCRIPTION**

Being a subdivision of 19.893 acres of land comprised of 3.578 acres out of T. J. Moore Survey 11 Abstract 5908, and 16.317 acres out of Deer and Dumb Asylum Survey 1, Abstract 8278, all in Tom Green County, Texas (See accompanying metes and bounds description for details)

**DEDICATION**

STATE OF TEXAS  
 COUNTY OF TOM GREEN

Therefore know all men by these presents that James R. Duncan, Trustee, being the owner of the herein described land, does hereby adopt this plat as correctly representing his subdivision to be known as THE BLUFFS ADDITION, SECTION FIVE to the City of San Angelo, Texas, and dedicates to public use the streets and easements shown hereon.

Witness under my hand this \_\_\_\_\_ day of \_\_\_\_\_, 1988

James R. Duncan, Trustee

STATE OF TEXAS  
 COUNTY OF TOM GREEN

Before me, the undersigned authority a Notary Public in and for said County and State, this date personally appeared James R. Duncan, Trustee, known to me to be the person whose name is subscribed to the foregoing instrument and acknowledged to me that he executed the same for the purposes and consideration therein expressed.

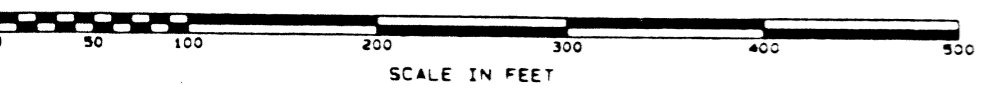
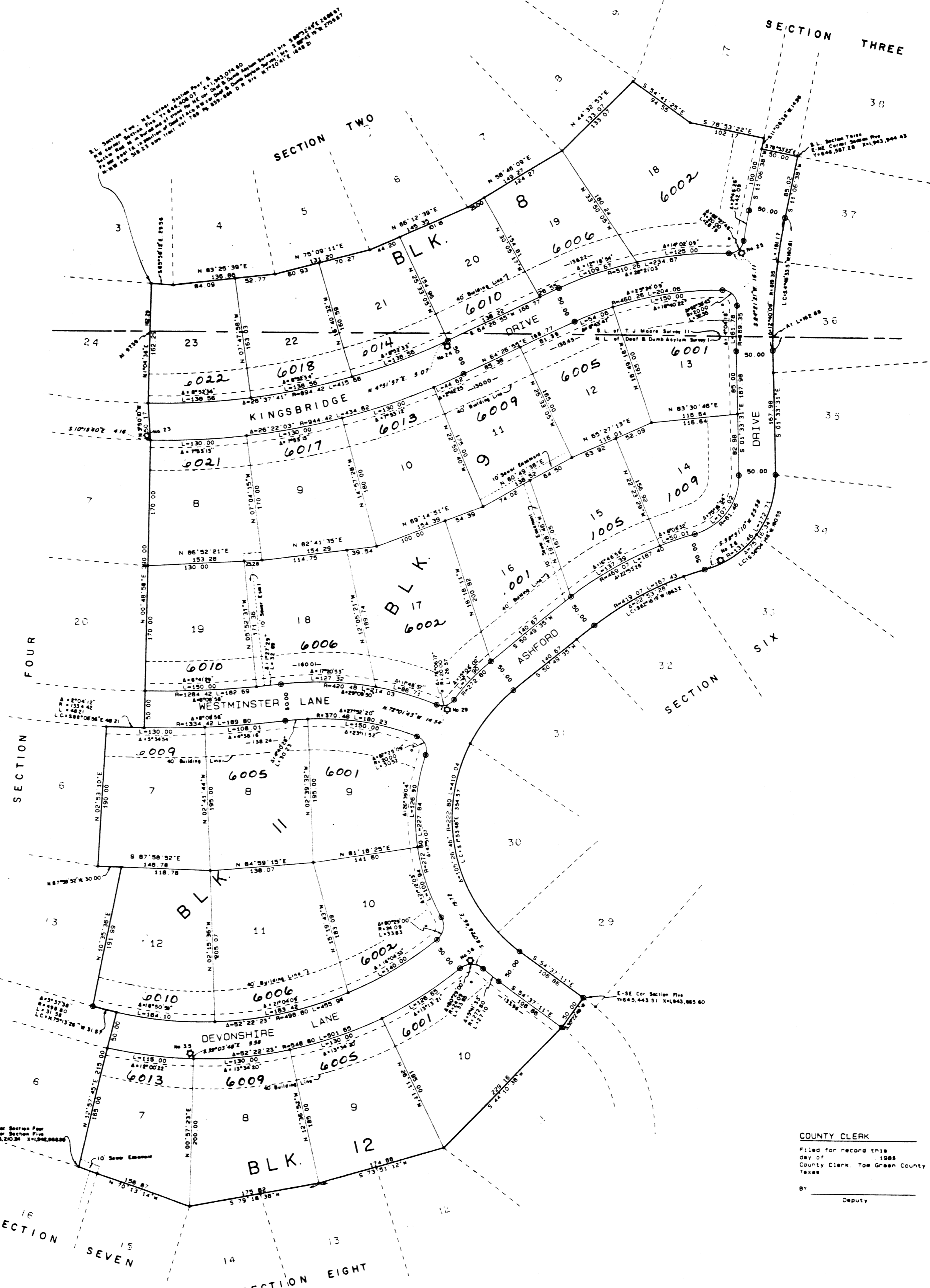
Given under my hand and seal of office this \_\_\_\_\_ day of \_\_\_\_\_, 1988

Notary Public in and for Tom Green County, Texas

COUNTY CLERK

Filed for record this \_\_\_\_\_ day of \_\_\_\_\_, 1988  
 County Clerk, Tom Green County, Texas

By \_\_\_\_\_  
 Deputy



**SURVEYORS CERTIFICATE**

KNOW ALL MEN BY THESE PRESENTS that I, W. C. Wilson, Jr., a Registered Public Surveyor of San Angelo, Texas, do hereby certify that I prepared this plat from an actual survey on the ground made of this land prior to the 22nd day of August, 1983, and that corners and monuments are shown just as they are on the ground and that this addition lies entirely outside the City limits of San Angelo, Texas.

W. C. Wilson, Jr.  
 Registered Public Surveyor No. 983

**PLANNING COMMISSION**

Approved for recording this \_\_\_\_\_ day of \_\_\_\_\_, 1988  
 City Planning Commission of San Angelo, Texas

By \_\_\_\_\_  
 Chairman

By \_\_\_\_\_  
 Secretary

**WATER SUPERINTENDENT/CITY ENGINEER**

Approved for recording this \_\_\_\_\_ day of \_\_\_\_\_, 1988

By \_\_\_\_\_  
 City Engineer

By \_\_\_\_\_  
 Water Superintendent

**CITY COUNCIL**

Approved for recording this \_\_\_\_\_ day of \_\_\_\_\_, 1988  
 City Council of San Angelo, Texas

By \_\_\_\_\_  
 Mayor

By \_\_\_\_\_  
 City Secretary

**COMMISSIONERS COURT**

Approved for recording this \_\_\_\_\_ day of \_\_\_\_\_, 1988  
 Commissioners Court of Tom Green County, Texas

By \_\_\_\_\_  
 County Judge

By \_\_\_\_\_  
 County Clerk

**THE BLUFFS ADDITION SECTION FIVE SAN ANGELO, TEXAS**

OWNER & DEVELOPER  
**JAMES R. DUNCAN, TRUSTEE**

WM. C. WILSON, JR.  
 LICENSED STATE LAND SURVEYOR & REGISTERED PUBLIC SURVEYOR