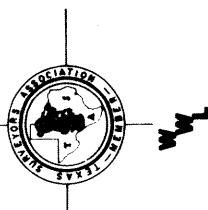




T.R. A A



SCALE: 1 IN. = 100 FEET.

NOTE: All Curves, Distances, and Coordinates are given in feet to the TEXAS COORDINATE SYSTEM - CENTRAL ZONE.

To obtain horizontal distance at mean elevation for this area multiply map grid distance by 1.00014689

LEGEND

- 5/8" Iron rod, p.c. OR P.T. (5/8" Iron rod except as noted)
- Control Monument (Brass disk in concrete)
- A - Central Angle of Curve
- L - Length of Curve
- LC - Long Chord bearing and distance

NOTES

- 1. There is a 10.00 foot wide drainage and underground utility easement and restricted streets shown hereon.
2. Control Monuments shown and described hereon reference the correct position for the lot and block corners of this addition. These control monuments should be used when it is necessary to reset any lot or block corner or curve point in this section of this Addition.
3. Dedication, Deed Restrictions and Maps & Bounds are recorded in Vol. 1 at page of the Deed Records of Tom Green County, Texas.
4. All drainage easements shall remain unobstructed.

DESCRIPTION

Being a subdivision of 20.000 acres of land comprised of 6.708 acres out of Deer and Dumb Asylum Survey 1, Abstract 8276, and 13.292 acres out of T. J. Moore Survey 11, Abstract 8277, both in Tom Green County, Texas. Said 20.000 acres also being out of that certain 518.23 acre tract described in deed recorded in Vol. 769 at page 869-864 of the Deed Records of Tom Green County, Texas.

DEDICATION

STATE OF TEXAS
COUNTY OF TOM GREEN
Therefore know all men by these presents: That I, James R. Duncan, Trustee of the County of Tom Green, Texas, do hereby adopt this plat as correctly representing this subdivision to be known as 'The Bluffs Addition' and do hereby dedicate to the City of San Angelo, Texas, and to the public use the streets and easements shown hereon.

Witness under my hand this day of 1985.
James R. Duncan, Trustee
Notary Public in and for Tom Green County, Texas

SURVEYORS CERTIFICATE

KNOW ALL MEN BY THESE PRESENTS: That I, the undersigned authority, a Notary Public in and for said County of Tom Green, Texas, do hereby certify that I prepared this plat from an actual survey on the 22nd day of August, 1985, and that corners and monuments are shown just as they are on the ground, and that this addition is within the City Limits of San Angelo, Texas.

Notary Public Surveyor No. 96
Wm. C. Wilson, Jr.
Secretary

PLANNING COMMISSION

Approved for recording this plat by the Planning Commission of the City of San Angelo, Texas.

By: Chairman
Secretary

WATER SUPERINTENDENT/ CITY ENGINEER

Approved for recording this plat by the City Engineer of the City of San Angelo, Texas.

By: City Engineer
Water Superintendent

CITY COUNCIL

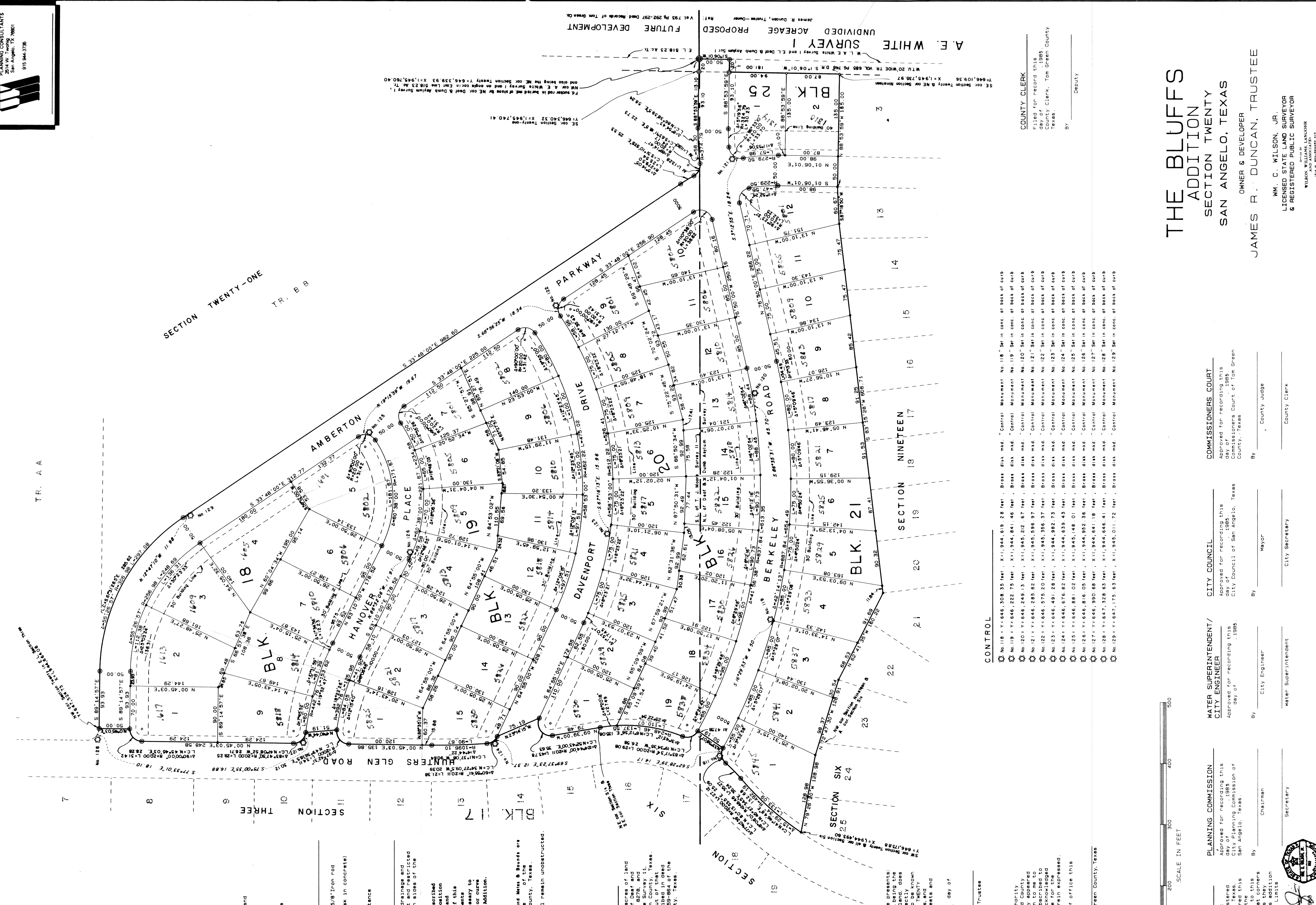
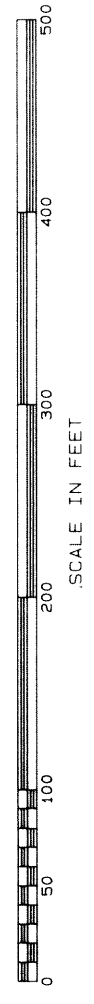
Approved for recording this plat by the City Council of San Angelo, Texas.

By: Mayor
City Secretary

COMMISSIONERS COURT

Approved for recording this plat by the Commissioners Court of Tom Green County, Texas.

By: County Judge
County Clerk



CONTROL

- No. 118 - Yr 646, 308.35 feet, X11,944,619.28 feet, Brass disk mid. Control Monument No. 118 "Set in conc. at back of curb
No. 119 - Yr 646, 222.75 feet, X11,944,841.46 feet, Brass disk mid. Control Monument No. 119 "Set in conc. at back of curb
No. 120 - Yr 646, 249.13 feet, X11,945,212.67 feet, Brass disk mid. Control Monument No. 120 "Set in conc. at back of curb
No. 121 - Yr 646, 285.82 feet, X11,945,596.97 feet, Brass disk mid. Control Monument No. 121 "Set in conc. at back of curb
No. 122 - Yr 646, 678.20 feet, X11,945,356.37 feet, Brass disk mid. Control Monument No. 122 "Set in conc. at back of curb
No. 123 - Yr 646, 491.28 feet, X11,944,982.73 feet, Brass disk mid. Control Monument No. 123 "Set in conc. at back of curb
No. 124 - Yr 646, 678.82 feet, X11,944,639.43 feet, Brass disk mid. Control Monument No. 124 "Set in conc. at back of curb
No. 125 - Yr 646, 881.02 feet, X11,945,148.01 feet, Brass disk mid. Control Monument No. 125 "Set in conc. at back of curb
No. 126 - Yr 646, 816.05 feet, X11,944,962.36 feet, Brass disk mid. Control Monument No. 126 "Set in conc. at back of curb
No. 127 - Yr 646, 990.68 feet, X11,944,641.18 feet, Brass disk mid. Control Monument No. 127 "Set in conc. at back of curb
No. 128 - Yr 647, 328.63 feet, X11,944,646.41 feet, Brass disk mid. Control Monument No. 128 "Set in conc. at back of curb
No. 129 - Yr 647, 175.63 feet, X11,945,011.72 feet, Brass disk mid. Control Monument No. 129 "Set in conc. at back of curb

COUNTY CLERK

Filed for record this 22nd day of August, 1985.
County Clerk, Tom Green County, Texas.

By: Deputy

THE BLUFFS ADDITION SECTION TWENTY SAN ANGELO, TEXAS

JAMES R. DUNCAN, TRUSTEE OWNER & DEVELOPER

WM. C. WILSON, JR. LICENSED STATE LAND SURVEYOR & REGISTERED PUBLIC SURVEYOR

WILSON WILLIAMS LANGRISH AND ASSOCIATES, INC. 2000 STATE STREET SAN ANGELO, TEXAS 76901

A. E. WHITE SURVEY I UNDIVIDED ACRES PROPOSED FUTURE DEVELOPMENT

James R. Duncan, Trustee - Owner
Vol. 733 Pg. 292-297 Deed Records of Tom Green Co.